

FABWORKS



**SPECIALIZING IN PRODUCTION METAL FABRICATION**

***White Horse Machine is excited to announce the rebranding  
of our Custom Metal & Aluminum Fabrication Shop to***

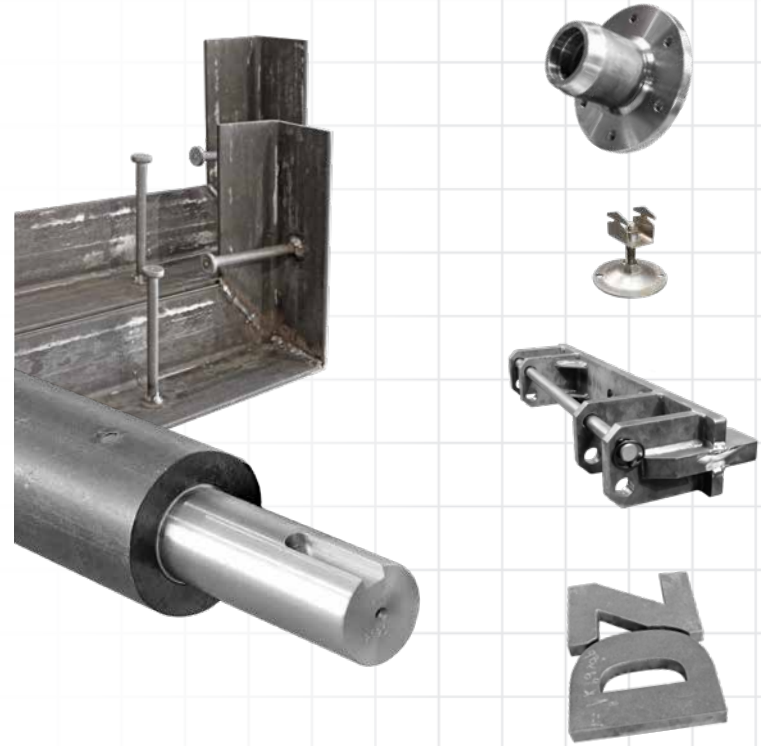


*Our new brand represents our expanded manufacturing space, increased capabilities,  
highly-skilled onsite manufacturing team and defines our vision for the future.*



*FABWORKS is innovation at work. Specializing in production metal fabrication since 1982, we are forging forward together  
with you to develop and manufacture your parts and components in the industrial, commercial and agricultural industries.*

# FABWORKS



*We Manufacture All Types of  
Custom and Production*



*Metal Building Components*



*Need it  
Aluminum?*

We are your full service facility for custom & production aluminum projects.

Broad range of aluminum stock in inventory!



## ┌ **Mig & Tig Welding**

With manufacturing facilities sized to accommodate welding of jumbo or small components and parts, we are your one-stop shop for all your welding projects. Our mig and tig welding is tailored to production or small runs and most of all, custom is our expertise!

*Welding of Steel, Aluminum, Stainless Steel, Cast Iron*



## ┌ **Precision Machining**

Geared for consistency and high-quality, White Horse Machine has provided machining services for many years to meet tight tolerance requirements in multitudes of applications. From small batch prototypes to full production quantities, please contact us with your needs today!



Max Sheet Size: 8' x 24' | Max Thickness: 1-1/2"

## **In-House Plasma Cutting**

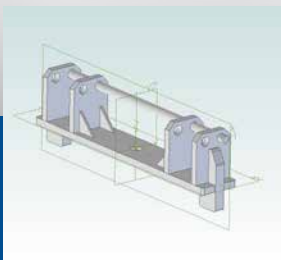
### **Your Thick Parts Fast!**

High accuracy and clean cutting requires minimal finishing. A cost-effective solution for thin to thick custom parts and components.



## **In-House Assembly of Newly-Welded Parts**

## **CAD Drawing**



We are equipped to work closely with you to develop your parts and components from the initial idea to design and production!



Ready for  
Results?



**Get a Quote!**

Email: [whmfab@ibyfax.com](mailto:whmfab@ibyfax.com)

Fax: 717-220-8408

Phone: 717-768-8313



*Industrial. Commercial. Agricultural.*



## Sheet Metal Fab

### **Shearing**

- Up to 1/4" x 10' length shearing capacity

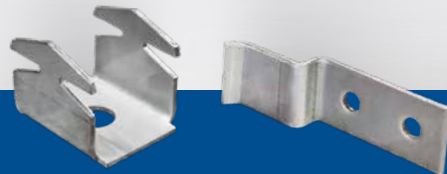
### **Forming**

- 130 ton capacity. Up to 12' length



## Production Metal Stamping

With highly-efficient progressive stamping dies we shear, form, and punch in one step, resulting in less individual machine setups. This cost-effective process is well suited for most any large volume and production stamping requirements



## Value-Added Services

- Tube Laser Cutting
- Sheet Laser Cutting
- Painting
- Powdercoating
- Product Finishing



## Metal Inventory

Need raw steel and aluminum stock fast? Our extensive inventory racks are loaded with countless shapes and sizes. Make your selection in full lengths or we can cut to the specs you request.



*Extensive Stock*



*for Fast Pickup!*

Ready for  
Results?



**Get a Quote!**

Email: [whmfab@ibyfax.com](mailto:whmfab@ibyfax.com)

Fax: 717-220-8408

Phone: 717-768-8313



*Industrial. Commercial. Agricultural.*

# The History of White Horse Machine

- 1974** - Company founded by the late David King on the family farm. Started repairing farm equipment for the local community with a welder driven by side pulley of an Allis Chalmers D19 tractor.
- 1976** - Operation of retail hardware and farm supply store began.
- 1978** - Designed & manufactured hydraulic reset plows that have been serving the ag community for over 40 yrs.
- 1980** - Business moved off the farm to it's current location in the town of White Horse. Named it White Horse Machine.
- 1982** - Added Metal fabricating services for the agriculture and construction industry.
- 1985** - Started manufacturing hydraulic manifolds.
- 1990** - 8,000 sq. ft. expansion for manufacturing, repairs, and fabricating.
- 2000** - Aluminum fabricating services began.
- 2010** - Built and designed the first prototype Leaf Spring reset plow of which 2,000 units were built as of 2021.
- 2011** - Ended production of hydraulic plows. Approximately 2,000 hydraulic plows were produced since 1977.
- 2012** - Started manufacturing torsion axles for various farm applications.
- 2015** - The manifold department diverged from White Horse Machine, was named White Horse Manifolds and moved to another facility in Kinzers, PA.
- 2020** - Plans were drafted for a proposed 26,000 sq. ft. building on 6.8 acres south of the existing shop.
- 2022** - Construction began on a new building dedicated to White Horse Hardware & Supply Store, Custom Metal & Aluminum Fabrication Shop. Opened in December 2022.
- 2023** - Rebranded the Custom Metal & Aluminum Fabrication Shop to White Horse Machine FABWORKS. Dedicated teams serving all your metal fabrication needs.



Phone: 717-788-1018  
Fax: 717-220-8408  
Email: whmfab@ibyfax.com  
122 White Horse Road  
Gap, PA 17527

**Hours**  
Monday to Friday:  
6:00 AM to 5:00 PM.  
Saturday: 7:00 AM to 12:00 PM.

**Shipping**  
Shipping is F.O.B. Gap, PA. We ship daily UPS, truck freight, or you can pick up at our location in Gap, PA.

