

# HOLD IT.

**AUTO-ADJUST WORKHOLDING TOOLS  
AND BRACKETS BY ARMOR TOOL.  
EVEN PRESSURE. ODD SIZES.**

PATENTED  
AUTO-ADJUST  
WORKHOLDING



**ARMOR™**  
TOOL

888.695.3055  
ARMOR-TOOL.COM



AUTO-ADJUST TECHNOLOGY

**AUTOMATIC**

## Armor Tool Mission

Armor Tool’s mission is to create for the creators. We commit to shaping our tools to match the current needs of the men and women perfecting their craft. We base our innovative patent designs off of sketches, descriptions, and images from everyday users.

We want to do more than progress tools and technology, but advance our creators’ ideas, confidence, and production. While we aim to capture your business, our goal is to earn your trust.

### AUTO-ADJUST TECHNOLOGY

Auto Adjust means the clamp maintains consistent pressure while automatically adjusting to different size work pieces. We also refer to this as “Self Adjusting.”

- Set Pressure:** Turn the adjustment screw to increase or decrease pressure.
- Tighten locking nut to lock in pressure setting

### AUTO-ADJUST BENEFITS

- Clamp automatically adjusts as you change materials.
- Fast Clamping: Improves productivity
- One handed clamping
- Set and forget pressure



### SOCIAL RESPONSIBILITY

Armor gives back **Greening for Good**  
[www.ssubi.org](http://www.ssubi.org)



**THE “COOL” OF THE TOOL**  
 REVOLUTIONARY AUTO-ADJUST MECHANISM



## A Tradition of Innovation

Armor Tool's innovative patents provide real value for end users and set Armor Tool apart from competitors. Over the past 30 years, the Poole family has invented tools that have been available through major companies such as 3M, Zinsser, American Tool, Kreg, Bessey, C.H. Hanson, Stanley, DAP, and Irwin. These American designed and globally manufactured tools have expanded to multiple continents like Asia and Europe. Armor Tool's superior clamp line features patented Auto-Adjust clamping and compound leverage, but we are also known for our full line of woodworking, industrial paint, and drywall tools.

We maintain success by listening to consumers' needs. We want to do more than progress tools and technology, but advance our creators' ideas, confidence, and production. While we aim to capture your business, our goal is to earn your trust.



# TABLE OF CONTENTS



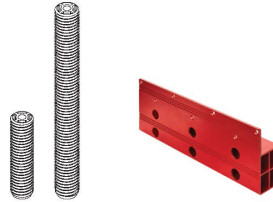
Butcher Block Workbench

**PG. 05**



Dog Peg Clamps

**PG. 06-07**



Dog Pegs

Dog Brackets

**PG. 08**



Dog Fences

**PG. 09**



Face and MPC Clamps

**PAG. 10**



T-Track Clamp

**PG. 11**



Auto-Jig™ Pocket Hole System

**PG. 12**



Drill Press Bench Clamp

**PG. 13**



Toggle Clamps

**PG. 14-18**



Auto-Adjust Pliers

**PG. 19**

# ARMOR™ Auto-Adjust Tools TOOL

Global Patents Issued & Pending | © COPYRIGHT 2018 ARMOR TOOL, LLC. | 6747 GATEWAY PARK DRIVE SAN DIEGO, CA 92154 USA



888-695-3055  
ArmorCS@Armor-Tool.com

Visit [ARMOR-TOOL.COM](http://ARMOR-TOOL.COM)  
for more product information



## Butcher Block Table

Armor Tool's Butcher Block Dog Table is the pinnacle of workshop efficiency. The table offers unlimited holding options and clamping combinations complimented by the Armor Dog Clamp product line. The Armor Dog Table belongs in every workshop. Crafted from 1/8" thick steel and 1 1/2" Hardwood butcher block work surface this bench tackles any job from DIY to professional applications. Casters are also available to create a mobile workstation.

- Solid Hardwood Butcher block style 1.5"
- Thick Hardwood with 3/4"(19mm) dog-holes
- Machine drilled beveled dog-holes spaced 0.75" apart
- 1/8" (3mm) thick powder coated steel stand
- Stands have 5" of height adjustability in 1" increments
- Heavy duty leveling feet
- Deluxe clamp package

Product	Dimensions	Material	Maximum Height	Hole Size	Table Thickness
36" Table Top	36" x 25"	Hardwood	34"	3/4"	1.5"
54" Table Top	54" x 25"	Hardwood	34"	3/4"	1.5"
36" Table Stand		3mm Steel / Powdercoat			
54" Table Stand		3mm Steel / Powdercoat			
Caster	3.0"				



36"x25"



54"x25"





AUTO-ADJUST TECHNOLOGY

**AUTOMATIC**

## Horizontal Dog Clamps

Introducing Armor Tool's new Horizontal Dog Clamp featuring patented Auto-Adjust Technology mounted on an extended Dog Peg. This versatile tool allows clamping on and above the table.

**P7-HH Automatic Horizontal Dog Clamp** is fitted with a 7.5" Spiral Aluminum Dog Peg that inserts into a Dog hole. This versatile clamp has the ability to extend up to 5.5" above the worktable surface and can rotate 360 degrees, allowing for a wide range of clamping applications. They Eliminate the need for constant readjustment and enables the clamp to maintain clamping pressure regardless of material thickness.

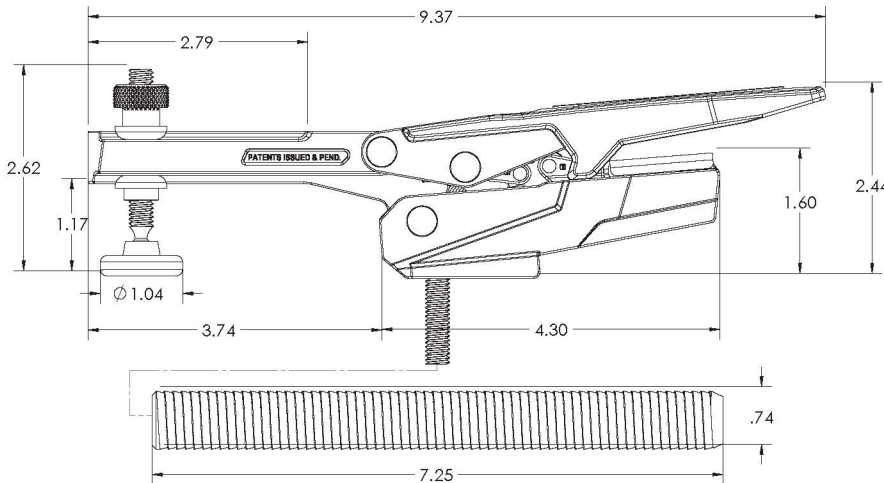
- Adjustable Clamping Force:** The integrated clamping force adjustment screw is used to adjust a wide range of clamping pressures of 25-400 lbs. Rotate the adjustment screw clockwise to decrease the pressure and counterclockwise to increase.
- Pivoting Spindle:** Armor's Pivoting Spindle automatically adjusts to variations in workpiece dimensions while maintaining clamping pressure.
- Large Handle:** Horizontal handle features soft insets for maximum grip and comfort.

- Versatile Aluminum Dog Peg:** Inserts into any 3/4" Dog hole. If you do not have a Dog Peg Table, simply drill a 3/4" hole in any worktable. Can also be used with Armor's Dog Peg Bracket mounted to your table.



**Interchangeable Dog Pegs available in 7.5" x 20mm, 3" x 20mm and 3" x 3/4", sold separately. 20mm Pegs fit Festool and most European tables.** (See product on page 10)

Model No.	Clamping Height	Nominal Clamping Force Range	Holding Capacity	Approx. Weight	Fits
<b>P7 - HH</b>	5.5"	25 - 400 lbs*	550 lbs.	1.5 lbs.	3/4" Peg Hole



\* Variable depending on the pressure screw setting and the force applied.

**AUTO-ADJUST TECHNOLOGY**

**AUTOMATIC™**

## In-Line Dog Peg Clamp and Knob

In-Line Dog Clamp featuring patented Auto-Adjust Technology mounted on a Dog Peg. Rotates 360 degrees, allowing for a wide range of clamping applications.

**P7-IL Auto-Pro In-Line Dog Clamp** is fitted with a Split Dog Peg that inserts and tightens into a dog hole. Enables the clamp to maintain clamping pressure regardless of material thickness. Use with **Armor Dog Fences** to brace material and **In-Line Dog Clamp Knobs** to virtually eliminate lift when clamping at high pressures.

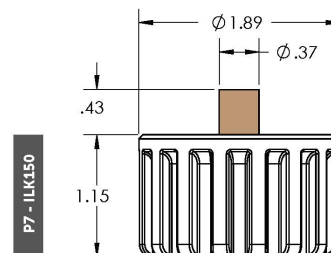
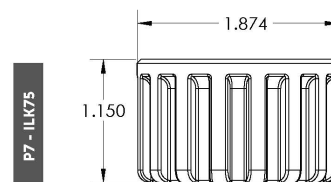
- **Adjustable Clamping Force:** The integrated clamping force adjustment screw is used to create a wide range of clamping pressures of 25-550 lbs. To engage clamp, set push bar against material and press down on the handle.
- **Hardened Steel Push Rod:** Adjusts in and out quickly to hold varying shapes and sizes. Extends up to 3.5".
- **Versatile Split Dog Peg:** Allows Clamping wherever a 20mm (Festool ) or 3/4" (Standard U.S.) dog hole is present. If you do not have a peg table, simply drill a 3/4" hole in any worktable.
- **Hardened Plastic Tip with Non-Marring Pad:** Center notch for secure corner clamping. Also holds rounded materials.
- **Rotating Lock Knob:** Secures clamp to Dog hole.

**In-Line Dog Clamp Knobs** (not included in P7 IL)  
Fits 0.75" to 1.5" thick Work Bench Tops

- **Improved Clamping Force:** Add knob to our inline dog clamp to eliminate any lift caused by extremely high clamping pressures (700lbs+).
- **Heavy Duty Shaft (5-16x18) INSERT:** Machined, nickel plated steel insert used for maximum reliability and quality.

Model No.	Clamping Thickness	Nominal Clamping Force Range	Fits
P7 - IL	3.75"	25 - 550 lbs*	20mm or 3/4" Peg Hole

Model No.	Holding Capacity	Fits
P7 - ILK75	700 lbs	0.5" - 1.0" Thick Bench
P7 - ILK150	700 lbs	1.0" - 1.5" Thick Bench



\* Variable depending on the pressure screw setting and the force applied.



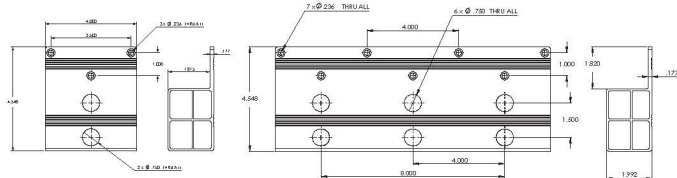
## Work Bench Accessories

### 4" and 12" Dog Brackets

Armor Automatic Dog Brackets are a perfect way to add the versatility of Armor Automatic Dog Clamps to your peg table or workbench. Automatic Dog Brackets contain dog holes that accommodate Armor Automatic Dog Clamps. Mount Automatic Dog Brackets to any peg table or work surface to extend the clamping range and capability. Mount accordingly to accommodate horizontal or vertical applications. Ideal for use with Armor's Patented Automatic Horizontal and In-Line Dog Clamps. Add Armor Automatic Dog Brackets, Dog Fences and Dog Clamps to your clamp collection, and you will be amazed how much easier it is to get your work done.

- Color Anodized Aluminum Extrusion
- Requires three (PBB-4) or seven (PBB-12) #8 Wood Screw to mount
- Contains two (PBB-4) or six (PBB-12) 3/4" Dog Holes

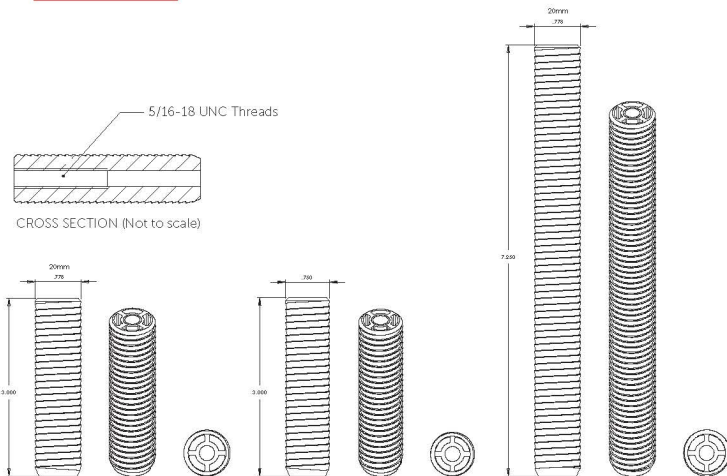
Model No.	Height	Length	Fits
PBB-4	4.55"	4"	3/4" Peg Hole
PBB-12	4.55"	12"	3/4" Peg Hole



### 3" and 7.5" Dog Pegs

- **AUTO-PRO 3" 20MM DIAMETER DOG PEG (P-20MM-3)**  
For use with the P7-HH (Pg 6) for 20mm table holes with short table depths. Also for use with Dog Fences on 20mm (Festool and European) tables.
- **AUTO-PRO 3" 3/4" DIAMETER DOG PEG (P-.75-3)**  
For use with the P7-HH (Pg 6) for table holes with short table depths.
- **AUTO-PRO 7.5" 20MM DIAMETER DOG PEG (P-20MM-7.5)**  
For use with the P7-HH (Pg 6) for 20mm table holes. Also for use with Dog Fences on 20mm (Festool and European) tables.

Model No.	Length	Diameter
P-20MM-3	3.0"	20mm
P-.75-3	3.0"	0.75"
P-20MM-7.5	7.5"	20mm



Global Patents Issued & Pending | © COPYRIGHT 2018 ARMOR TOOL, LLC. | 6747 GATEWAY PARK DRIVE SAN DIEGO, CA 92154 USA



888-695-3055  
ArmorCS@Armor-Tool.com

Visit [ARMOR-TOOL.COM](http://ARMOR-TOOL.COM)  
for more product information





VIDEO How to use dog fence  
<https://youtu.be/BJezw4LWD1I>

## 4", 8" and 14" Dog Fences

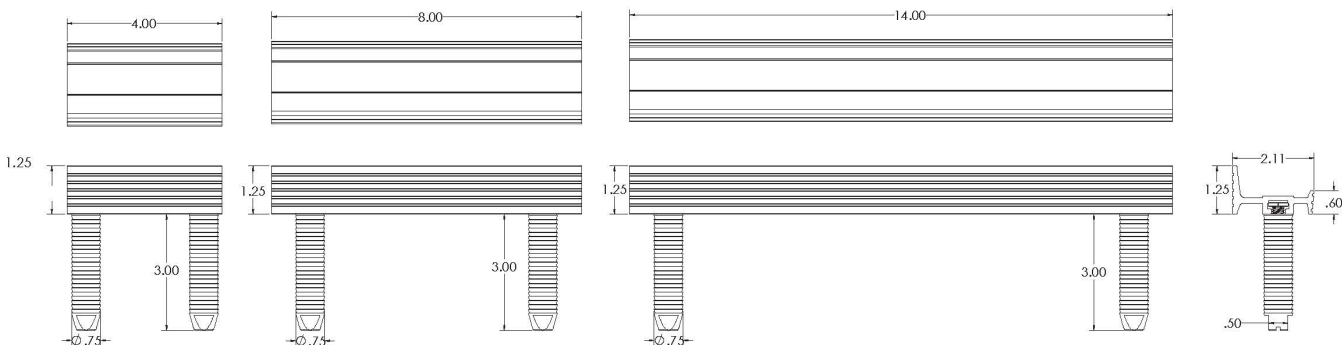
Armor Dog Fences easily slide into any dog hole with a minimum 3/4" diameter and allow you to position and brace materials or set up corners. If you do not have a Dog Peg Table, simply drill a 3/4" hole in any worktable. Dog Fences are reversible with heights of 1 1/4" on tall side, 5/8" on short to accommodate variations in work thickness and length for sanding and routing. Comes with two 3/4" diameter dogs. Dogs fit into a track under the dog fence, and spacing can be easily adjusted. Ideal for use with Horizontal and In-Line Dog Clamps. Add Armor Dog Brackets, Dog Fences and Dog Clamps to your clamp collection, and you will be amazed how much easier it is to get your work done.

- Colored Anodized Aluminum Extrusion
- Fence Features a high and low side
- Fits 3/4" dog holes | Adjustable Dog

Interchangeable 3" x 20mm Dog Pegs are available to accommodate different-sized peg tables, sold separately.



Model No.	Height	Length	Fits
PF-4	1.25"	4"	3/4" Peg Hole
PF-8	1.25"	8"	3/4" Peg Hole
PF-14	1.25"	12"	3/4" Peg Hole



Global Patents Issued & Pending | © COPYRIGHT 2018 ARMOR TOOL, LLC. | 6747 GATEWAY PARK DRIVE SAN DIEGO, CA 92154 USA



888-695-3055  
 ArmorCS@Armor-Tool.com

Visit [ARMOR-TOOL.COM](http://ARMOR-TOOL.COM)  
 for more product information



AUTO-ADJUST TECHNOLOGY

**AUTOMATIC**

## Face Clamps and Multi Purpose Clamps

Armor's Face Clamps feature Auto-Adjust technology enabling the jaws to adjust and grip varying thicknesses without readjusting. Simply adjust the pressure screw and begin clamping. In addition, the circular face clamp and multi purpose pad spreads force evenly preventing material marring. Soft Grip for comfort. Set the desired clamping pressure, and the jaws apply that pressure according to the material's size.

### AUTO-ADJUST FACE CLAMPS

SKU No.	TYPE
3FC-70	3" Face Clamp



3.0"

### AUTO-ADJUST FACE CLAMPS

SKU No.	TYPE
6FC-70	6" Face Clamp



6.0"

### AUTO-ADJUST MULTI PURPOSE CLAMPS

SKU No.	TYPE
3MPC-70	3" Multi Purpose Clamp



3.0"

### AUTO-ADJUST MULTI PURPOSE CLAMPS

SKU No.	TYPE
6MPC-70	6" Multi Purpose Clamp



6.0"

3FC-70 | 6FC-70 | 3MPC-70 | 6MPC-70

FACE CLAMPS AND MULTI PURPOSE CLAMPS

Global Patents Issued & Pending | © COPYRIGHT 2018 ARMOR TOOL, LLC. | 6747 GATEWAY PARK DRIVE SAN DIEGO, CA 92154 USA



888-695-3055  
ArmorCS@Armor-Tool.com

Visit [ARMOR-TOOL.COM](http://ARMOR-TOOL.COM)  
for more product information



AUTO-ADJUST TECHNOLOGY

**AUTOMATIC™**

## Horizontal & In-Line T-Track Clamp

Armor Tool's Horizontal and In-Line T-Track Clamps feature patented auto-adjust technology mounted on a 5/16" T-Bolt. The linked clamping pressure adjustment screw creates a wide-range of clamping pressures. Rotate the adjustment screw clockwise to decrease the pressure and counterclockwise to increase it.

- T-Track Clamp fits with a 5/16" T-Bolt that inserts into a T-Track.
- Easily rotates 360 degrees, allowing for a wide-range of clamping applications.
- Eliminates the need for constant readjustment and enables the clamp to maintain clamping pressure regardless of material thickness.
- Large Handle: Horizontal handle for maximum grip and comfort.

SKU Model	Description	Clamping Range	Holding Capacity	Approx. Weight	Ajustable Clamping Force	Fits
<b>B5-HH</b>	Horizontal	5.50" (Vertical)	550 lbs.	1.5 lbs.	25-150 lbs.	Standard 5/16" T-Tracks
<b>B7-IL</b>	In-Line	3.75" (Vertical)	700 lbs.	1.3 lbs.	25-550 lbs.	Standard 5/16" T-Tracks
<b>B7-IL-BR</b>	B7 Bracket					Most pocket hole jigs



B7 Bracket



VIDEO In-Line Clamp Competitor  
<https://www.youtube.com/watch?v=BbfuHdU7Bsw>



Horizontal T-Track



In-Line T-Track



**AUTO-ADJUST TECHNOLOGY**



# Auto-Jig Pocket Hole System

**ONE-STEP POCKET HOLES**

The Armor Tool Auto-Jig is changing the landscape of pocket hole joinery and the way you make pocket holes in your shop. Our fully automated system self-adjusts your drill guide setting and drill bit collar based off of the thickness of the piece you're clamping (visit [Armor-Tool.com](http://Armor-Tool.com) for demonstrations), creating the optimal pocket hole with the strongest joint. No more manual setting, measuring, or adjusting. The Auto-Jig takes the guesswork out of pocket hole joinery for all woodworkers.

The Auto-Adjust clamp allows you to clamp varying thicknesses without readjusting. Simply put your work piece into the patented Armor Auto-Adjusting Clamp and the Auto-Jig will do the rest. The color coded screw system with our Color-Coat technology makes it easy to match the screw size and depth of the pocket hole, while the color coating itself offers anti-corrosive protection to your workpiece.

The Auto-Jig was made and designed with the wood worker in mind. All features are self contained in this system: self-adjusting drill guide block, self-adjusting drill bit and collar, auto-adjusting clamp, and dust collection port. The jig is set to the perfect height to allow standard 2x4's as extension wings and it can easily be affixed to any surface for a more permanent work station.

### AUTO-JIG ACCESSORIES



THE DRILL GUIDE AUTOMATICALLY ADAPTS TO WOOD THICKNESS. JIG IS SET TO DRILL ACCURATE HOLES, EVERY TIME.



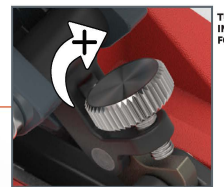
DUAL POSITION DRILL-HOLE SPACING



OPPOSABLE DUST COLLECTION PORT



DRILL BIT COLLAR AUTOMATICALLY SETS TO WOOD THICKNESS. TIGHTEN THE COLLAR SET SCREW BEFORE DRILLING.



TURN INTO INCREASE FORCE

ADJUSTABLE CLAMPING FORCE. PRESSURE STAYS WHERE IT IS SET. NO READJUSTING REQUIRED.

### COLOR-COAT™

THE KEY TO STRONG, LASTING JOINTS™  
TRI-LAYER ANTI-CORROSION COATED FASTENERS  
COLOR CODED FOR EASY IDENTIFICATION



FOR INDOOR/OUTDOOR USE



SCREW SELECTION CHART (IMPERIAL & METRIC)

FRONT MOUNTED JAW HANDLE ALLOWS EASY OPEN/CLOSE OF THE JAW

- COARSE 1" 25mm
- FINE 1" 25mm
- COARSE 1-1/4" 32mm
- FINE 1-1/4" 32mm
- COARSE 1-1/2" 38mm
- FINE 1-1/2" 38mm
- COARSE 2" 50mm
- FINE 2" 50mm
- COARSE 2-1/2" 64mm



MATERIALS & WORKMANSHIP  
GARANTIA 5 ANOS  
MATERIALES Y MANO DE OBRA  
GARANTIA DE CINCO AÑOS  
MATERIAUX ET TRAVAIL

Global Patents Issued & Pending | © COPYRIGHT 2018 ARMOR TOOL, LLC. | 6747 GATEWAY PARK DRIVE SAN DIEGO, CA 92154 USA



**AUTO-ADJUST TECHNOLOGY**

**AUTOMATIC™**



## Drill Press / Bench Clamp

Armor Auto Adjust Drill Press/Bench Clamps offer dual application. With mounts for Workbench T-Track and for Drill Press/Table machines, this clamp fits all your needs. Comfortable Soft Grip and rubber tip for soft materials round out the features. One-hand clamping operation frees up your other hand to hold material for fast easy set up.

- Dual application w/ mounts for Workbench T-Track and Drill Press/Table machines
- Exceptional convenience
- Soft-Grip (w/ removable pad) and rubber tip for soft materials round out the features
- One-hand, fast clamping

Model No.	Length	Mount Hardware	Mount Hardware	Jaw Range	Nominal Clamping Force Range
<b>3DP - 70</b>	3.0"	5/16" T-Bolt	5/16" I-Nut	2.5"	25 - 400 lbs.
<b>6DP - 70</b>	6.0"	5/16" T-Bolt	5/16" I-Nut	4.5"	25 - 250 lbs.





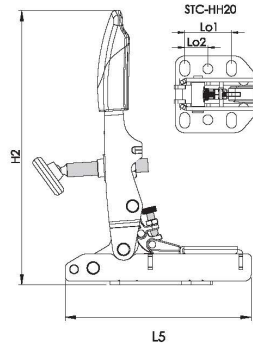
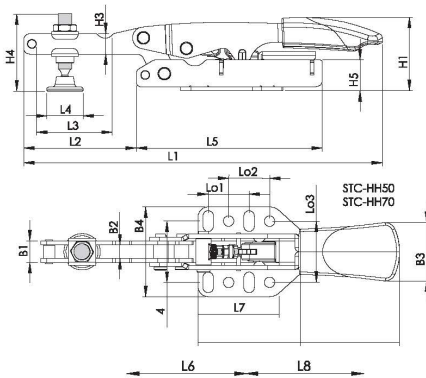
AUTO-ADJUST TECHNOLOGY

**AUTOMATIC**

## Horizontal Toggle Clamp with Horizontal Base Plate

- Auto-adjust means the clamp maintains consistent pressure while automatically adjusting to different sized workpieces. Rotate the adjustment screw to achieve the required clamping pressure, clockwise to decrease and counterclockwise to increase.
- Eliminates the need for constant adjustments. Increases productivity and safety.
- Automatic toggle clamps replace traditional, manual toggle clamps. Mounting bases designed to match most existing common hole patterns.
- Constructed from hardened carbon steel for long cycle life.

Model No.	Opening	Nominal Clamping Force Range	Holding Capacity	Approx. Weight	Fastener
<b>STC-HH20</b>	1 3/16"	25 - 250 lbs.*	450 lbs.	0.6 lbs.	3/16" or M5
<b>STC-HH50</b>	1 9/16"	25 - 550 lbs.*	700 lbs.	1.1 lbs.	1/4" or M6
<b>STC-HH70</b>	2 3/8"	25 - 550 lbs.*	700 lbs.	1.2 lbs.	1/4" or M6



	Total length	Length of extension arm	Spindle adjustment range	Pressure plate diameter	Length of base	Length of base plate 1	Length of base plate 2	Length of 2-comp handle	Height of handle (closed)	Height of handle (open)	Height of extension arm	Height of spindle, cpl.	Height of base	Width of extension arm (external)	Width of extension arm (internal)	Width of 2-comp handle	Width of base plate	Length of hole spacing 1	Length of hole spacing 2	Length of hole spacing 3	Width of elongated hole	Diameter of hole
	L1	L2	L3	L4	L5	L6	L7	L8	H1	H2	H3	H4	H5	B1	B2	B3	B4	Lo1	Lo2	Lo3	Lo4	Ø
STC-HH20	6.52"	1.77"	0.97"	0.63"	3.25-3.26"	1.76"	1.28"	1.75"	1.75"	5.49"	0.40"	1.85"	0.98"	0.39"	0.24"	1.00"	1.65"	1.00"	0.50"	1.10"	1.00-1.25"	0.22"
STC-HH50	8.77"	2.75"	1.86"	0.89"	4.55"	2.50"	1.98"	2.46"	1.79"	6.71"	0.50"	1.88"	0.98"	0.53"	0.33"	1.43"	2.19"	1.00"	1.00"	1.50"	1.26-1.73"	0.25"
STC-HH70	8.77"	2.75"	1.86"	0.89"	4.55"	2.50"	1.98"	2.46"	2.51"	7.43"	0.50"	2.52"	1.47"	0.53"	0.33"	1.43"	2.19"	1.00"	1.00"	1.50"	1.26-1.73"	0.25"

\* Variable and dependent on spindle settings, pressure screw setting, force applied, etc. Some small spindle adjustments may be required to achieve maximum clamp opening.



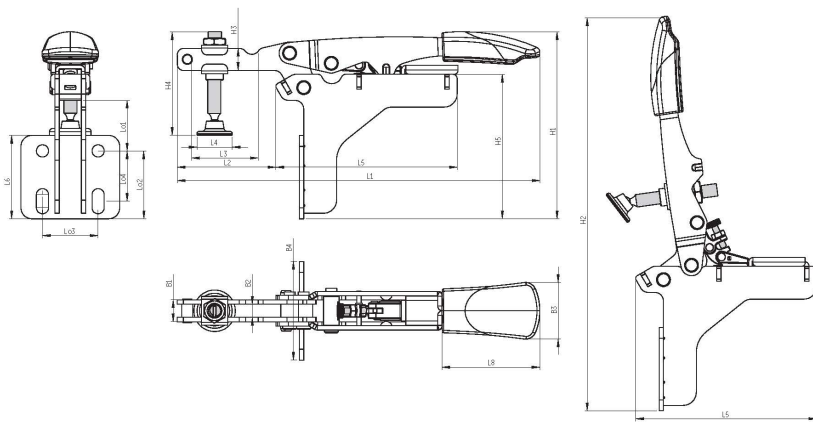
**AUTO-ADJUST TECHNOLOGY**

**AUTOMATIC™**

## Horizontal Toggle Clamp with Angled Base Plate

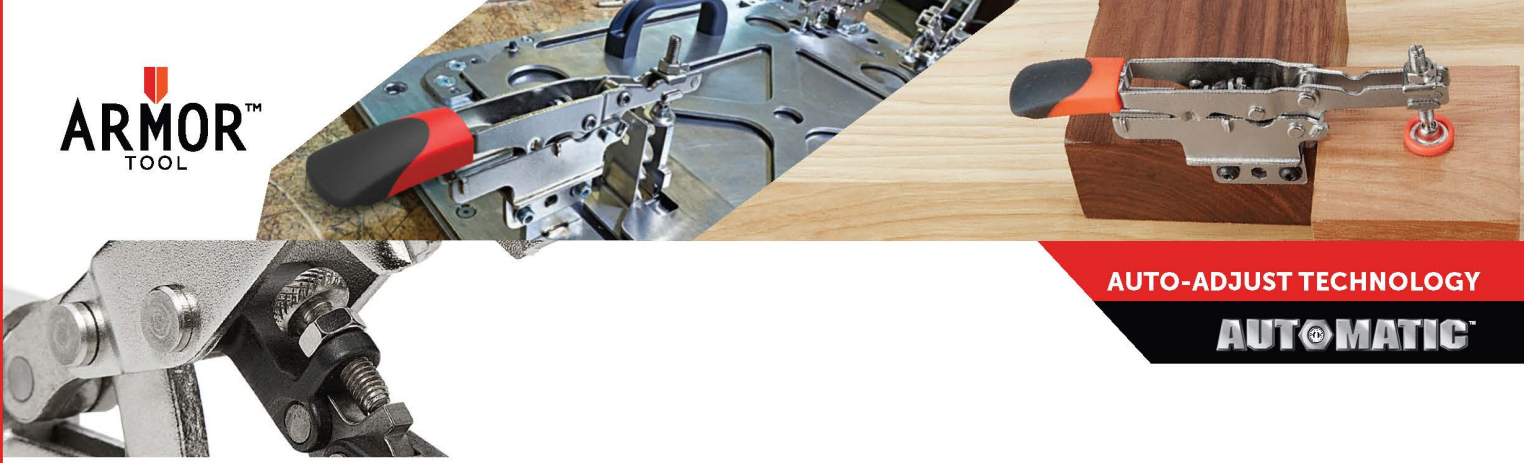
- Auto-adjust means the clamp maintains consistent pressure while automatically adjusting to different sized workpieces. Rotate the adjustment screw to achieve the required clamping pressure, clockwise to decrease and counterclockwise to increase.
- Eliminates the need for constant adjustments. Increases productivity and safety.
- Automatic toggle clamps replace traditional, manual toggle clamps. Mounting bases designed to match most existing common hole patterns.
- Constructed from hardened carbon steel for long cycle life.

Model No.	Opening	Nominal Clamping Force Range	Holding Capacity	Approx. Weight	Fastener
<b>STC - HA20</b>	1 3/16"	25 - 250 lbs.	450 lbs.	0.6 lbs.	3/16" or M5
<b>STC - HA50</b>	1 9/16"	25 - 550 lbs.	700 lbs.	1.2 lbs.	1/4" or M6



	Total length		Length of extension arm		Spindle adjustment range		Pressure plate diameter		Length of base		Length of base plate 1		Length of base plate 2		Length of 2-comp handle		Height of handle (closed)		Height of handle (open)		Height of extension arm		Height of spindle, cpl.		Height of base		Width of extension arm (external)		Width of extension arm (internal)		Width of 2-comp handle		Width of base plate		Length of hole spacing 1		Length of hole spacing 2		Length of hole spacing 3		Width of elongated hole		Diameter of hole	
	L1	L2	L3	L4	L5	L6	L7	L8	H1	H2	H3	H4	H5	B1	B2	B3	B4	Lo1	Lo2	Lo3	Lo4	Ø																						
STC-HA20	6.52"	1.77"	1.20"	0.63"	1.50-3.26"	1.50"	—	1.76"	3.36"	7.07"	0.40"	1.86"	2.60"	0.39"	0.24"	1.00"	1.78"	0.91"	1.22"	1.00"	0.90"	0.22"																						
STC-HA50	8.77"	2.75"	1.86"	0.89"	2.00-4.55"	2.00"	—	2.46"	4.36"	9.28"	0.50"	2.52"	3.32"	0.53"	0.33"	1.43"	2.25"	1.08"	1.58"	1.50"	1.00"	0.25"																						

\* Variable and dependent on spindle settings, pressure screw setting, force applied, etc. Some small spindle adjustments may be required to achieve maximum clamp opening.



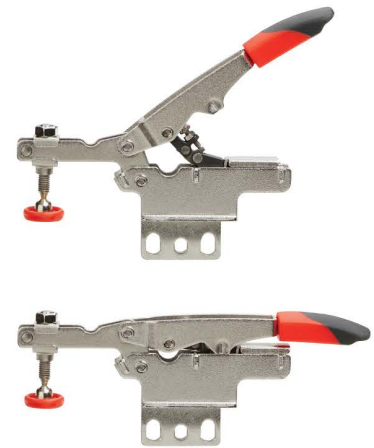
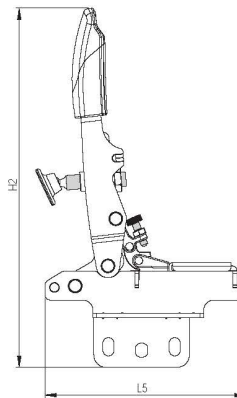
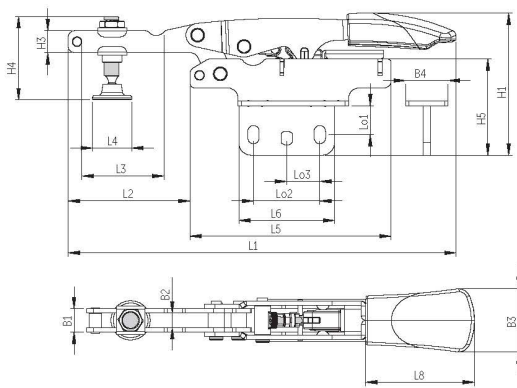
AUTO-ADJUST TECHNOLOGY

**AUTOMATIC**

## Horizontal Toggle Clamp with Vertical Base Plate

- Auto-adjust means the clamp maintains consistent pressure while automatically adjusting to different sized workpieces. Rotate the adjustment screw to achieve the required clamping pressure, clockwise to decrease and counterclockwise to increase.
- Eliminates the need for constant adjustments. Increases productivity and safety.
- Automatic toggle clamps replace traditional, manual toggle clamps. Mounting bases designed to match most existing common hole patterns.
- Constructed from hardened carbon steel for long cycle life.

Model No.	Opening	Nominal Clamping Force Range	Holding Capacity	Approx. Weight	Fastener
<b>STC - HV20</b>	1 3/16"	25 - 250 lbs.*	450 lbs.	0.6 lbs.	3/16" or M5
<b>STC - HV50</b>	1 9/16"	25 - 550 lbs.*	700 lbs.	1.2 lbs.	1/4" or M6



	Total length	Length of extension arm	Spindle adjustment range	Pressure plate diameter	Length of base	Length of base plate 1	Length of base plate 2	Length of 2-comp handle	Height of handle (closed)	Height of handle (open)	Height of extension arm	Height of spindle, cpl.	Height of base	Width of extension arm (external)	Width of extension arm (internal)	Width of 2-comp handle	Width of base plate	Length of hole spacing 1	Length of hole spacing 2	Length of hole spacing 3	Width of elongated hole	Diameter of hole
	L1	L2	L3	L4	L5	L6	L7	L8	H1	H2	H3	H4	H5	B1	B2	B3	B4	Lo1	Lo2	Lo3	Lo4	Ø
STC-HV20	6.52"	1.77"	0.97"	0.63"	3.25"	1.50"	—	1.76"	2.54"	6.27"	0.40"	1.85"	1.77"	0.39"	0.24"	1.00"	0.71"	0.39"	1.00"	0.50"	—	0.22"
STC-HV50	8.77"	2.75"	1.86"	0.89"	4.55"	2.17"	—	2.46"	3.22"	8.13"	0.50"	1.88"	2.18"	0.53"	0.33"	1.43"	0.96"	0.66"	1.50"	0.75"	—	0.25"

\* Variable and dependent on spindle settings, pressure screw setting, force applied, etc. Some small spindle adjustments may be required to achieve maximum clamp opening.

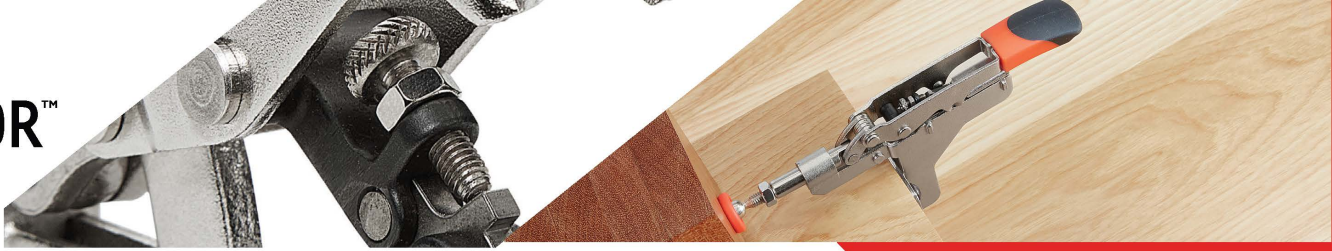
Global Patents Issued & Pending | © COPYRIGHT 2018 ARMOR TOOL, LLC. | 6747 GATEWAY PARK DRIVE SAN DIEGO, CA 92154 USA



888-695-3055  
ArmorCS@Armor-Tool.com

Visit [ARMOR-TOOL.COM](http://ARMOR-TOOL.COM)  
for more product information





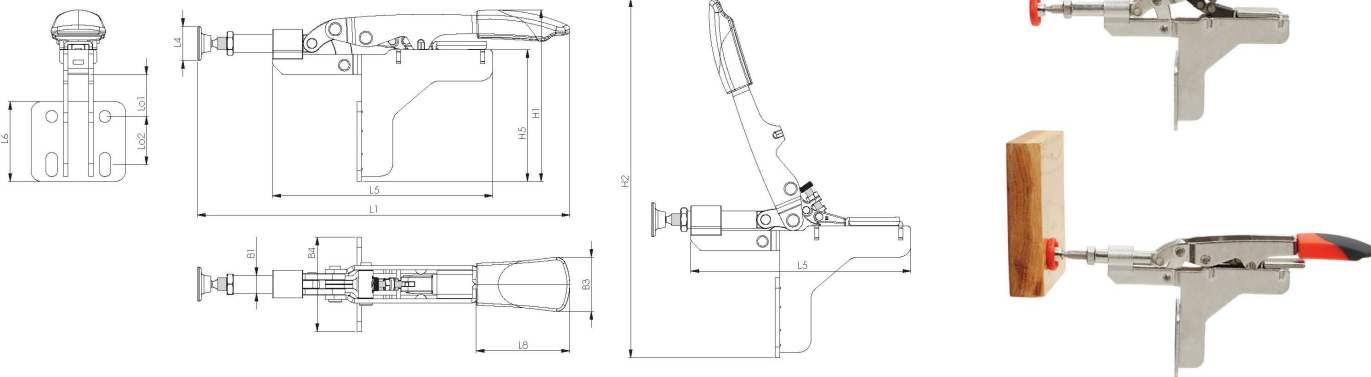
AUTO-ADJUST TECHNOLOGY

**AUTOMATIC™**

## In-Line Toggle Clamp with Angle Base Plate

- Auto-adjust means the clamp maintains consistent pressure while automatically adjusting to different sized workpieces. Rotate the adjustment screw to achieve the required clamping pressure, clockwise to decrease and counterclockwise to increase.
- Eliminates the need for constant adjustments. Increases productivity and safety.
- Automatic toggle clamps replace traditional, manual toggle clamps. Mounting bases designed to match most existing common hole patterns.
- Constructed from hardened carbon steel for long cycle life.

Model No.	Opening	Nominal Clamping Force Range	Holding Capacity	Approx. Weight	Fastener
<b>STC - IHA15</b>	3/8"	25 - 250 lbs.*	450 lbs.	0.6 lbs.	3/16" or M5
<b>STC - IHA25</b>	3/4"	25 - 550 lbs.*	700 lbs.	1.2 lbs.	1/4" or M6



Total length	Length of extension arm	Spindle adjustment range	Pressure plate diameter	Length of base	Length of base plate 1	Length of base plate 2	Length of 2-comp handle	Height of handle (Closed)	Height of handle (open)	Height of extension arm	Height of spindle, cpl	Height of base	Width of extension arm (external)	Width of extension arm (internal)	Width of 2-comp handle	Width of base plate	Length of hole spacing 1	Length of hole spacing 2	Length of hole spacing 3	Width of elongated hole	Diameter of hole
L1	L2	L3	L4	L5	L6	L7	L8	H1	H2	H3	H4	H5	B1	B2	B3	B4	Lo1	Lo2	Lo3	Lo4	Ø
7.00"	-	-	0.63"	4.14"	1.50"	-	1.75"	3.22"	6.75"	-	-	2.48"	0.33"	-	1.00"	1.78"	0.79"	0.79-1.00"	1.00"	-	0.22"
9.62"	-	-	0.89"	6.31"	2.00"	-	2.46"	4.19"	8.59"	-	-	3.15"	0.47"	-	1.43"	2.25"	0.91"	0.91-1.20"	1.50"	-	0.25"

\* Variable and dependent on spindle settings, pressure screw setting, force applied, etc. Some small spindle adjustments may be required to achieve maximum clamp opening.



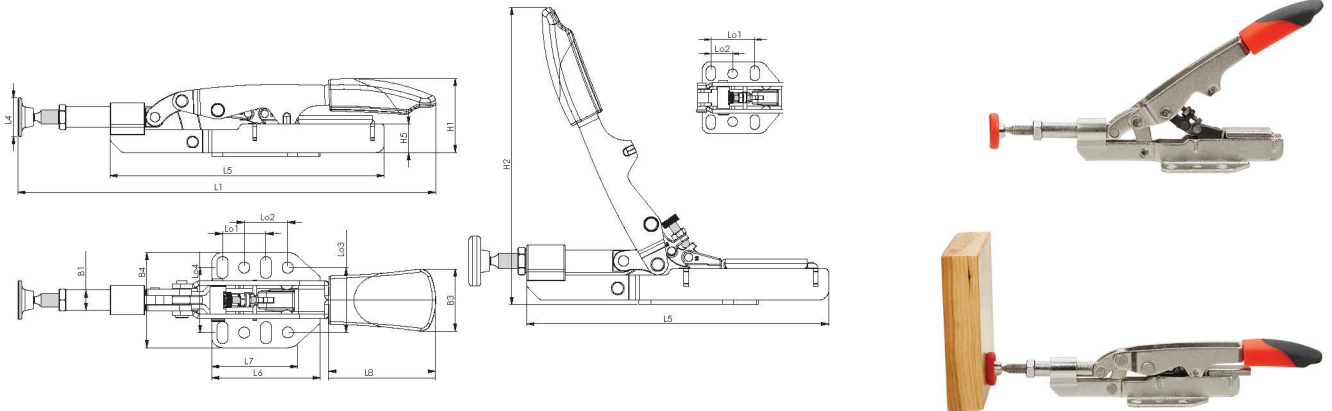
AUTO-ADJUST TECHNOLOGY

**AUTOMATIC™**

## In-Line Toggle Clamp with Horizontal Base Plate

- Auto-adjust means the clamp maintains consistent pressure while automatically adjusting to different - sized workpieces. Rotate the adjustment screw to achieve the required clamping pressure, clockwise to decrease and counterclockwise to increase.
- Eliminates the need for constant adjustments. Increases productivity and safety.
- Automatic toggle clamps replace traditional, manual toggle clamps. Mounting bases designed to match most existing common hole patterns.
- Constructed from hardened carbon steel for long cycle life.

Model No.	Opening	Nominal Clamping Force Range	Holding Capacity	Approx. Weight	Fastener
<b>STC - IHH15</b>	3/8"	25 - 250 lbs.*	450 lbs.	0.6 lbs.	3/16" or M5
<b>STC - IHH25</b>	3/4"	25 - 550 lbs.*	700 lbs.	1.1 lbs.	1/4" or M6



(All measurements in inches)	Total length	Length of extension arm	Spindle adjustment range	Pressure plate diameter	Length of base	Length of base plate 1	Length of base plate 2	Length of 2-comp handle	Height of handle (closed)	Height of handle (open)	Height of extension arm	Height of spindle, cpl.	Height of base	Width of extension arm (external)	Width of extension arm (internal)	Width of 2-comp handle	Width of base plate	Length of hole spacing 1	Length of hole spacing 2	Length of hole spacing 3	Width of elongated hole	Diameter of hole
	L1	L2	L3	L4	L5	L6	L7	L8	H1	H2	H3	H4	H5	B1	B2	B3	B4	Lo1	Lo2	Lo3	Lo4	Ø
STC-IHH15	7.00"	-	-	0.63"	4.14"	1.78"	1.49"	1.76"	1.29"	4.81"	-	-	0.55"	0.33"	-	1.00"	1.66"	0.50"	1.00"	1.00"	1.00-1.25"	0.22"
STC-IHH25	9.62"	-	-	0.89"	6.31"	2.50"	1.98"	2.46"	1.70"	6.22"	-	-	0.66"	0.47"	-	1.43"	2.19"	1.00"	1.00"	1.50"	1.26-1.73"	0.25"

\* Variable and dependent on spindle settings, pressure screw setting, force applied, etc. Some small spindle adjustments may be required to achieve maximum clamp opening.



**AUTO-ADJUST TECHNOLOGY**

**AUTOMATIC™**

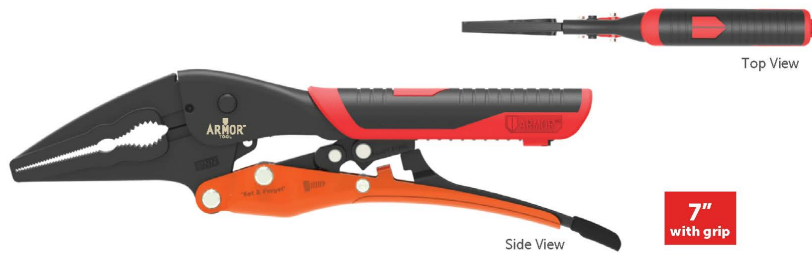
## Auto-Adjust Curved Jaw & Needle Nose Pliers

Armor Automatic Pliers feature Auto-Adjust technology enabling the jaws to adjust and grip varying thicknesses without readjusting. Simply adjust the pressure screw and the force of the jaws are set to consistently grip whatever is placed between them. The handle comes with a soft grip to reduce fatigue and work with comfort.

- Auto-Adjust Technology** 1 3 **Exceptional convenience**
- Soft-Grip (w/ removable grip) for comfort** 2 4 **Meets or exceeds ASME standards**

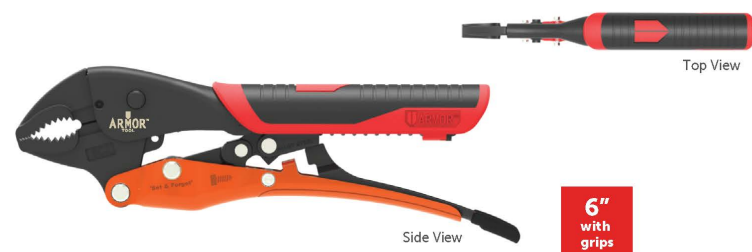
### AUTO-ADJUST NEEDLE NOSE PLIERS

SKU No.	TYPE
A09300G	7" Needle Nose



### AUTO-ADJUST CURVED JAW PLIERS

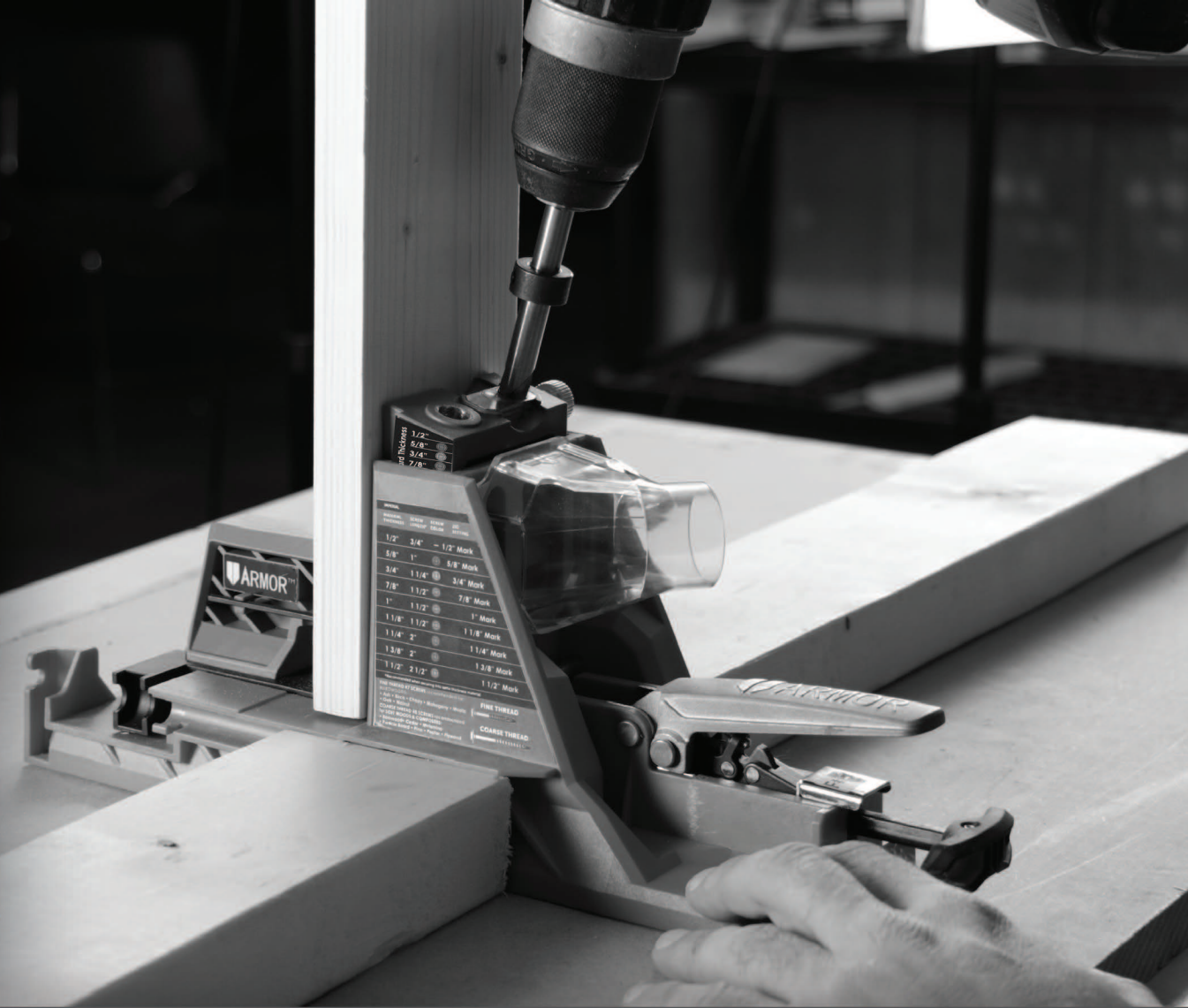
SKU No.	TYPE
A06100G	6" Pliers



### AUTO-ADJUST CURVED JAW PLIERS

SKU No.	TYPE
A10100G	10" Pliers





# ARMOR™ TOOL

*Experienced Innovation*



888-695-3055  
ArmorCS@Armor-Tool.com

Visit [ARMOR-TOOL.COM](http://ARMOR-TOOL.COM)  
for more product information